

Bentley University

Scholars @ Bentley

Bentley Alumni Magazine

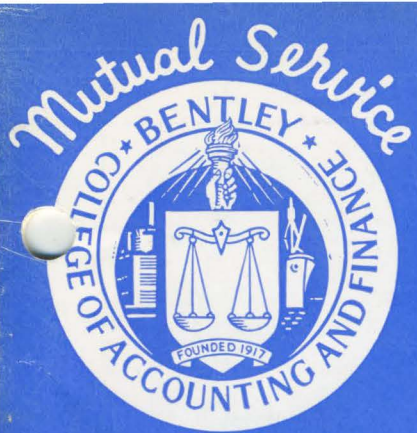
Historical Publications

1-1963

Volume 05 Issue 02 - January 1963

Bentley University

Follow this and additional works at: <https://scholars.bentley.edu/alumnimag>



THE
BENTLEY
Alumnus

VOLUME V, NUMBER 2

JANUARY, 1963



... on the threshold of a new era!"

State of the Alumni Message

By President M. G. Sherman, C.P.A.

DAY CLASS OF 1933



Bentley College this year has made another tremendous advance in its objectives, having acquired the site for its proposed campus.

Your Alumni Association has tried to keep pace with the fast-moving events. I am proud to report that we have done well. Every Chapter Meeting was attended by at least one of the National Officers, and I wish to publicly recognize Vice President Paul Tierney for his work in this regard. His contribution in time and leadership to chapter operations was certainly most praiseworthy.

The enthusiasm at these meetings was such, that I have no reservations whatsoever in predicting that the Association will continue to grow in numbers and increase its participation in the affairs of the College.

The officers of all the Chapters have my sincerest gratitude for their demonstrations of willingness to work in enlarging and stimulating their chapter operations.

A new Norfolk County Chapter in Massachusetts was formed and an extremely exciting meeting, well attended, was held. This Chapter will bear watching as its founders predict great things for the future.

The Reunion Committee headed by Treasurer Bill Turkington is considering the Waltham Cam-

pus for this June, and plans are going forward towards this goal. Vice President Matty Murtha and his group are putting the finishing touches on their preparations for a "Bentley Night at the Pops" and other popular social events for alumni and their families.

We, the alumni, were of incalculable assistance in the Development Program to provide the necessary classrooms and facilities in order to qualify for collegiate status.

All alumni can now lend their support to the development of our new campus facilities. The objective of Vice President Herb Corey and his Membership and Annual Giving Committee is to get 100% alumni participation.

We must and will demonstrate to all that we alumni approve wholeheartedly the program entered into by the officers of the College. Please demonstrate your enthusiasm by continuing or becoming a contributing alumnus. We'd also like to receive your comments. Let us hear from you.

At this halfway point of the alumni fiscal year, I want to thank the officers and executive committee for their splendid help. With them, and together with your cooperation, we shall go forward with Bentley.

EDITORIAL — importance of percentage participation

The wonderful news about the purchase of the Lyman Memorial Campus has now spread to the far corners of the earth. The news has been received with mixed emotions by many individuals.

We have witnessed reactions of genuine joy mixed with sincere desire to help this ambitious project become reality. In others we have detected a strong undercurrent of concern about high construction costs.

This concern translates into either "How much can I give to make this program successful?" or "Now they will be after me to finance this thing."

Every dollar contributed to the

College by an alumnus is important. At the moment, however, the number of alumni contributing is far more important than the total dollars given. It is essential that each alumnus understands the role of percentage participation by alumni in the annual giving program.

The record of alumni support achieved by Bentley College in the next few years will determine, to a great extent, the dollar grants and major contributions we obtain from foundations and corporations. This record is based primarily on the percentage of alumni giving to their college.

Last year 25.8% of our alumni gave money in varying amounts to Bentley. This year each of you has the opportunity to raise this percentage to an even more impressive level.

Each new donation increases our percentage record. By establishing a noteworthy record of alumni support now, we improve our chances of securing outside financial assistance for the long-range development of the new campus.

When you are approached in the spring, remember it is not as important how much you give as it is that you give.



THE BENTLEY *Alumnus*

EDITOR
Robert A. Bourne

PUBLICATION COMMITTEE

Alfred R. Dietz, D 51
Arthur F. Goodearl, E 49
James G. Hajjar, E 52
Leonard Jesse, D 51
Isabella L. Kegresse, E 58
James J. Kiely, *English Dept.*
Donald H. Nickerson, D 56
Edward J. Powers, D 26
Joseph J. Shortall, E 42
James H. Sullivan, D 48
Thomas J. Thomas, D 60
Ethel B. Wiley, E 56

NATIONAL ALUMNI OFFICERS

M. G. Sherman, D 33, *President*
Herbert R. Corey, D 29, *Vice President*
Matthew J. Murtha, E 38, *Vice President*
Paul E. Tierney, E 26, *Vice President*
William E. Turkington, D 34, *Treasurer*
Helen R. Queenan, E 52, *Secretary*

HONORARY OFFICERS

Harry C. Bentley,
Founder and President Emeritus
Maurice M. Lindsay, *President Emeritus*

COLLEGE OFFICERS

Thomas L. Morison, *President*
Rae D. Anderson, *Vice President and Dean*
Chris A. Thurman, *Controller*
Henry Y. Porter, *Secretary-Treasurer*

ALUMNI OFFICE

Robert W. Kimball,
Executive Alumni Secretary

PLACEMENT OFFICE

Raymond F. Sundstrom Jr., *Director*
David J. Little, *Assistant Director*

THE BENTLEY ALUMNUS is published in the Fall, Winter and Spring.



Member of
AMERICAN ALUMNI COUNCIL

VOLUME V, NUMBER 2

JANUARY, 1963

CONTENTS

STATE OF ALUMNI MESSAGE	2
EDITORIAL	2
THE CHALLENGE OF GROWTH	4
NEW COLLEGE CONTROLLER	5
KEY TO NEW PROGRAM	5
CAMPUS LOCATION MAP	6
COVERING THE CONTOURS	6
SITE FOR SOARING EYES	7
NOTES ON CHAPTER MEETINGS	8-11
TV-PRESS CONFERENCE PICTURES	12-13
THROUGH THE YEARS	15-22
DIRECTORY OF CHAPTER PRESIDENTS	23
SECOND SEMESTER LIBERAL ARTS COURSES	back cover

FRONT COVER

The camera catches a momentous moment of Bentley history as President Morison reveals plans for the development of the recently-purchased Lyman Memorial Campus in Waltham. Turn the page for the inside story.

the challenge of

G R O W T H

By President Thomas L. Morison



College Year	Enrollment	Faculty and Staff	Educational Plant in Square Feet
1957-1958	2,800	75	32,500
1962-1963	4,000	200	92,500
1967-1968	5,000	300	200,000

To qualify the above figures with all the whys and wherefores would detract from the message I am trying to convey to you in this issue of the *Alumnus*. Perhaps, however, the figures demonstrate to some extent the explosive growth of Bentley College in the past five years and the continued growth we anticipate in the five years to come.

There is in progress a "master plan" for the development of the College for the next quarter century. A "master plan," I am well aware, merely provides a convenient place to record changes as the years go on. Ours will be no exception. Nonetheless, we hope to present such a plan to the Annual Meeting of the Board of Trustees in June of 1963.

Of present importance to you and to the development of the plan is the unanimous decision of the Board of Trustees to acquire the beautiful Lyman estate on Cedar Hill in Waltham, which acquisition is now *fait accompli*. Here, nearly one hundred acres of land, offering many commanding locations, provide opportunities for future development which seem to us to be almost unlimited—and our imaginations are good.

The estate itself, to be known as the Lyman Memorial Campus of Bentley College, is described in more detail elsewhere in this issue. I would like to provide you with some of the background leading up to the vital decision, in which, we trust, every Bentley alumnus will take pride.

Need for Added Facilities

That the need for additional plant would soon become critical became apparent early in 1960, when the important decision was reached to request of the Board of Collegiate Authority the power to grant the Bachelor's degree—rather than only the Associate degree at first, as originally intended. Our success in obtaining this authority is a tribute to the reputation of the College and the standing of its alumni.

A second significant decision was reached in 1961, when the Executive Committee voted to advance the introduction of the Junior year in the baccalaureate program to September of 1962, rather than September of 1963, as originally planned. The program was accelerated to permit earlier application for accreditation (which application cannot be submitted until two years after the first class awarded the bachelor's degree has been graduated).

Needless to say, this second decision further complicated our projection of future space needs and it became apparent that immediate efforts must be made to find the appropriate solution.

The Back Bay Picture

Many sites in the Back Bay were explored. Those buildings available to us were old, over-priced, in poor repair, and remotely located from our base of operations. An exception was the University Club, and we carefully investigated its possibilities.

No solution could be found, however, to the problem of parking and traffic congestion, a constant irritant to our student body, to our staff, and—I am sure—to our neighbors. We contacted every principal in the Prudential Complex, then in the planning stages, to find that each project would provide for its own needs, but that there would be no "plus" for Bentley College.

The news that the new Civic Auditorium was, at least for the present, to make no provision for off-street parking, and that the toll road extension would soon spill thousands of additional cars into the Copley Square area each day, convinced us that the cause was hopeless.

There followed a series of student body and staff surveys, which were most revealing and reassuring. Opinion was almost unanimous that the College should relocate to a suburban campus with unlimited parking facilities. The surveys also revealed that public transportation

facilities were not essential, provided that our educational services could be continued, at least in part, in the Back Bay area.

We also discovered that, apart from those students residing on campus, our commuting students travel in about equal numbers from or to the North and South Shores, and from or to North, West and South Suburban areas.

Land Site Search

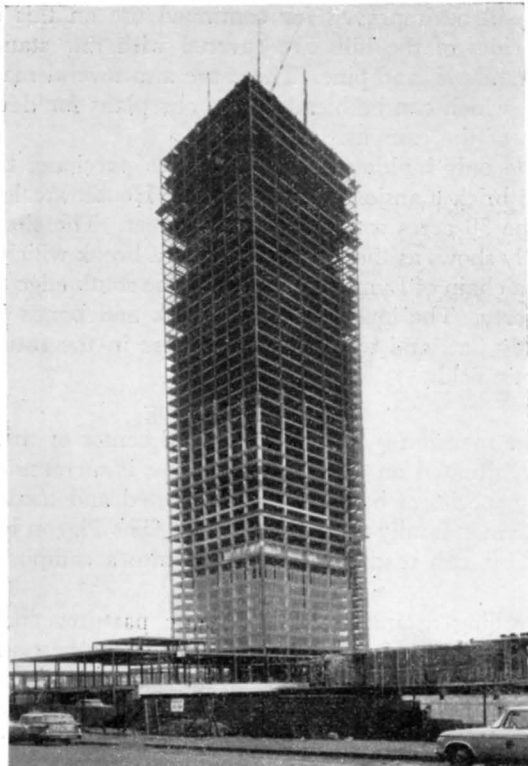
We began our search west of Boston, hoping to provide the most convenience for all. The search was time-consuming, and, from time to time, discouraging. Dean Anderson and I carefully explored the possibilities in seventeen properties and viewed and rejected many others as unsuitable.

We had begun to extend our search to the North and to the South, when, to our great good fortune, the availability of the Lyman Estate became known to us. This site, located less than six miles from our present Back Bay properties and about two miles from Route 128, is also accessible by railroad and by bus. The Executive Committee and the full Board of Trustees moved rapidly to authorize its purchase.

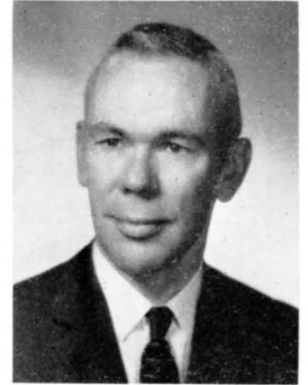
From Here?

Since our planning for development of the campus has only just begun, for obvious reasons I can't tell you much more at this point. I *can* tell you that we shall continue to offer educational opportunities in the Back Bay indefinitely.

As to ownership of the Lyman Memorial Campus, we are proud and pleased! We know you share those sentiments. More to come.



CHRIS A. THURMAN



JOHN M. KEMPSTER

FILLS CONTROLLERSHIP

Chris A. Thurman, C.P.A., returned to Bentley College last October as Controller, with the academic rank of Associate Professor.

In this newly-created position, Mr. Thurman will supervise the functions of the Secretary-Treasurer and Bursar, the Director of Purchasing and Building Superintendence, and the Director of Public Relations. He will also be in charge of systems coordination on a college-wide basis.

On the road to this responsible assignment, Mr. Thurman earned two degrees from California colleges, was graduated from Bentley, became a C.P.A. in Massachusetts, engaged in all phases of public accounting, and did extensive managing consulting work.

KEY TO NEW PROGRAM

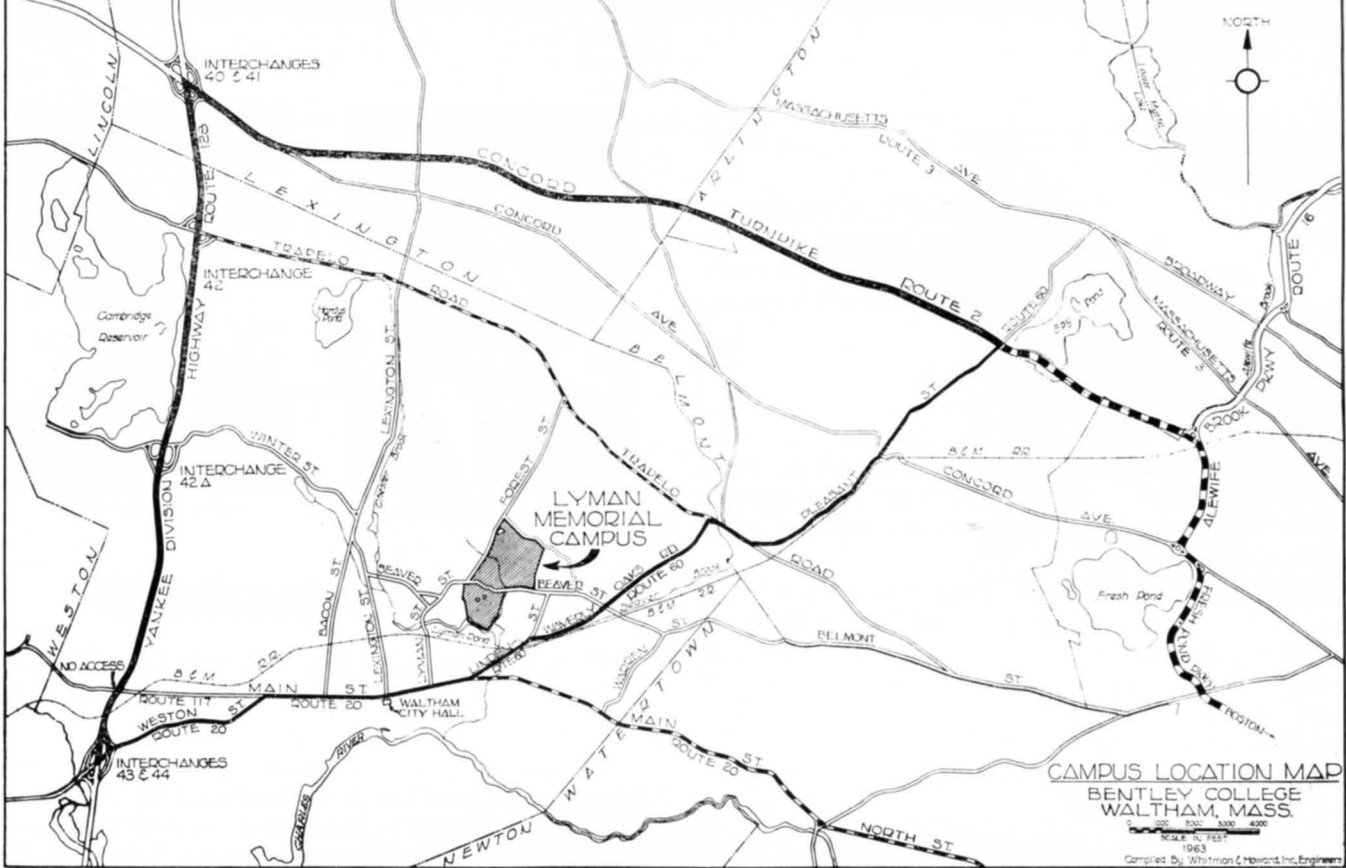
When John M. Kempster joined the faculty on January 1, he brought with him a wealth of business and teaching experience. Full Professor Kempster will plan and direct the courses in Controller Development which start next fall.

He leaves Raytheon after four years as Controller of their Electronic Services Operation. Prior to that he was Staff Assistant to the Controller of Dennison Manufacturing Company.

Professor Kempster received a B.S. in B.A. degree from the University of Missouri and his M.B.A. from the University of Chicago. In addition to completing all course work for a Ph.D. at M.I.T., he has passed all parts of the C.P.A. examination.

Included in his teaching experience are six years on the faculty at M.I.T. and one year at the University of Toledo.

The neighboring Prudential tower now casts a staggering shadow across Boylston Street as it nears its 52-story height.



COVERING THE CONTOURS

Until you have had an opportunity to see color slides or to visit the Lyman Memorial Campus in Waltham, perhaps the illustrations on these magazine pages and a few descriptive adjectives will give you a clearer impression of the contours and sweeping beauty of our recently acquired 100 acres.

As you can tell from the site plan, the new property is divided into two segments, 70 acres and 30 acres. The 70 acre plot on the north side of Beaver Street was formerly known as the "Lyman Pastures". However, the designation of pasture land is quite misleading because there is a grade variation ranging from 60 ft. above sea level to 220 ft. at the high point in the vicinity of the tentative location for the Student Union and Cafeteria.

The land slopes off about 70 ft. from that spot to what could be described as a plateau with a center point some-



THE BRICK MANSION

where between buildings 4 and 6 on the site plan. There is a sharp drop toward Beaver Street in the southwest corner, but a more gradual leveling off toward the intersection of Forest and Beaver streets.

Pond for Recreation

One of the great natural assets of this section is the pond just off Forest Street near Pigeon Lane. For years this pond has been used for ice skating by local people, and will be improved for continued use on this basis. The sides of the hills are covered with fine stands of birch, maple, and pine. There are also several majestic oaks, which can be blended into our plans for development of the campus.

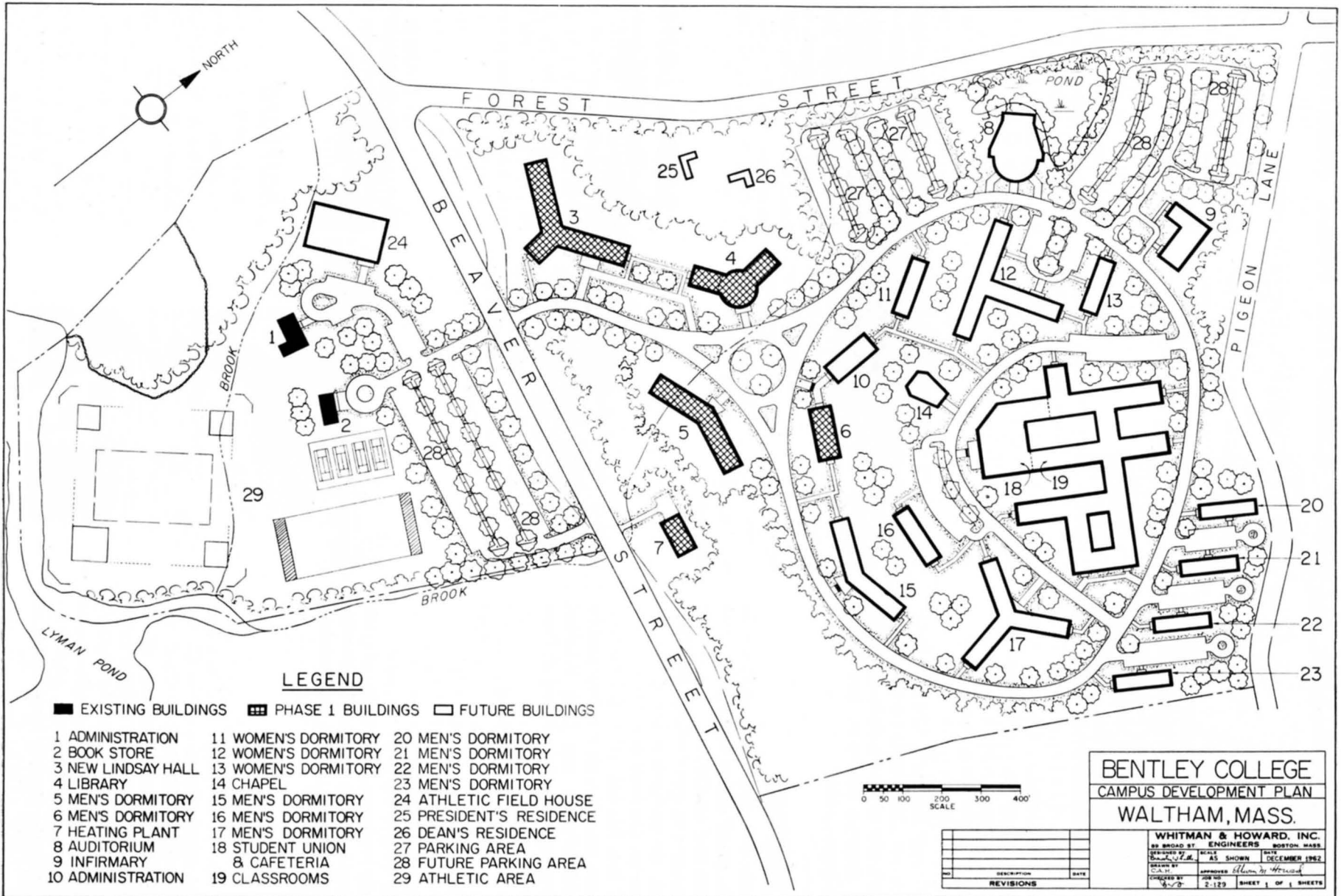
The only buildings involved in the purchase, the 22 room brick mansion and the Pigeon House, are located on the 30 acres south of Beaver Street. The site plan clearly shows as the western border, a brook which runs into a chain of Lyman ponds along the south edge of the property. The land along the brook and ponds is decidedly flat, and well-adapted for use in the future as athletic fields.

Lovely Landscaping

The mansion is about in the dead center of this segment, situated on a knoll. The house is surrounded by many species of beautiful trees, planted and tended by the Lyman family through the years. The Pigeon House, close by, can readily be converted into a campus book store.

Strolling around the picturesque pastures and surrounding hills of the future campus is the best way to absorb the panoramic vistas of the countryside and the exciting prospect of buildings to come. We hope you all have an early opportunity to sample this solid ground which means so much to the progress of Bentley College.

SITE FOR SOARING EYES



LEGEND

EXISTING BUILDINGS
 PHASE I BUILDINGS
 FUTURE BUILDINGS

- | | | |
|--------------------|------------------------------|--------------------------|
| 1 ADMINISTRATION | 11 WOMEN'S DORMITORY | 20 MEN'S DORMITORY |
| 2 BOOK STORE | 12 WOMEN'S DORMITORY | 21 MEN'S DORMITORY |
| 3 NEW LINDSAY HALL | 13 WOMEN'S DORMITORY | 22 MEN'S DORMITORY |
| 4 LIBRARY | 14 CHAPEL | 23 MEN'S DORMITORY |
| 5 MEN'S DORMITORY | 15 MEN'S DORMITORY | 24 ATHLETIC FIELD HOUSE |
| 6 MEN'S DORMITORY | 16 MEN'S DORMITORY | 25 PRESIDENT'S RESIDENCE |
| 7 HEATING PLANT | 17 MEN'S DORMITORY | 26 DEAN'S RESIDENCE |
| 8 AUDITORIUM | 18 STUDENT UNION & CAFETERIA | 27 PARKING AREA |
| 9 INFIRMARY | 19 CLASSROOMS | 28 FUTURE PARKING AREA |
| 10 ADMINISTRATION | | 29 ATHLETIC AREA |

BENTLEY COLLEGE
 CAMPUS DEVELOPMENT PLAN
 WALTHAM, MASS.

WHITMAN & HOWARD, INC.	
85 BROAD ST.	ENGINEERS BOSTON, MASS.
DESIGNED BY	DATE
DRAWN BY	AS SHOWN
CHECKED BY	DATE
APPROVED	DATE
DATE	DATE
2-123	DECEMBER 1962
8-7-P	SHEET 1 OF 1 SHEETS



NO.	DESCRIPTION	DATE

NOTES ON ALUMNI CHAPTER FALL MEETINGS

By Robert W. Kimball, Executive Alumni Secretary

• *berkshire*

The Berkshire County Chapter met on October 24th, at the Green Acres in Cheshire and following dinner, Mr. Arthur C. McGill, Chairman, Pittsfield Housing Authority, gave an illustrated talk on "Urban Renewal and Its Importance to Pittsfield and Berkshire County". Currently an important problem in many communities, Mr. McGill's presentation prompted an onslaught of questions from the local alumni present.

George Emerson, Chapter President, presided during the dinner and business session with Rolland Boucher, Program Chairman, introducing the guest speaker.

• *chicago*

Henrici's Restaurant continued as the place where Chicago Alumni meet and on October 17, following the usual sumptuous Roast Beef Dinner, the group was brought up to date on developments at the College by Bob Kimball, Alumni Secretary. Bob's remarks were supplemented by John Wallace and John Whalley, local members of the Board of Trustees.

President Charles Hanley served as Dinner Chairman and emphasized the importance of maintaining an active chapter in the Chicago Area. He also expressed the hope that as our Degree Program becomes more fully implemented a number of graduates will wish to locate in the mid-west where many job opportunities are available.

• *cincinnati*

Mr. Victor Turyn, Assistant Special Agent in charge of the Cincinnati F.B.I. Division, outlined the jurisdiction and operations of his agency at the alumni chapter meeting on October 15, held in Shuller's Wigwam. He included reference to major experiences in his prior services at the Boston, New York and St. Louis offices. Larry Fischer,

Chapter President, presided at the meeting and it was voted to publish a local area directory in the near future with copies to all alumni.

• *detroit*

James L. Harrison, D38, Analyst for the Ford Motor Company, was elected President of the Detroit Chapter at the October 18th meeting held in the Harmonie Club. Other new officers are Vice President J. Alfred Herrick; Secretary George Beneduci and Treasurer Harry Westman.

Jack Stewart, retiring president, arranged for the meeting and following dinner Bob Kimball, Alumni Secretary, focused the group's attention in the direction of 921 Boylston Street, Boston, including late news on the Prudential Center development on the site of the old Bentley Campus.

• *eastern new york*

Departing from the usual dinner meeting, the Eastern New York Chapter held a luncheon on Wednesday, October 31, at the Van Dyck Hotel in Schenectady.

Mr. Harold A. McKinnon, Vice President of the General Electric Company, Fort Wayne, Indiana, an alumnus and trustee of Bentley College, was the guest speaker.

Mr. McKinnon was no stranger to the group as many alumni present are employed by General Electric and no doubt a large number had

been interviewed initially by Mr. McKinnon for the Business Training Course with General Electric.

Playing to a captive audience, Mr. McKinnon effectively and informally traced the history of Bentley School from 1917 to date and emphasized the importance of its recent transition to a degree-granting College. For the benefit of alumni employed at General Electric, he pinpointed, with ease, the present location of many familiar names within the General Electric system.

Maynard Farren, outgoing president, served as Luncheon Chairman and conducted the annual election of officers. N. Vincent Gutsch, Executive Secretary of the Schenectady Chamber of Commerce, is the new President and other officers approved were: Vice President Robert D. Groff; Secretary Melvyn E. Morris; Treasurer Fred G. Grosso.

• *greater boston*

Mr. Thomas McLernon, General Manager of the M.T.A., provided the spark for a spirited meeting of the Greater Boston Chapter on October 4th at Polcari's Restaurant. Paul E. Tierney, National Vice President, served as toastmaster; retiring president George Carmichael was General Dinner Chairman.

New Officers elected during the evening were President G. John Meehan; Vice Presidents John Killgoar and Mary Doyle; Secretary Mary Horne; Treasurer James Sarcia.

• *hartford*

The City Club was the scene of the fall meeting of the Hartford Chapter on October 9. Al Gualtieri, Chapter President, introduced the guest speaker, Stanley N. Bergman, New Haven Attorney and C.P.A., who gave a most informative and light vein talk on the rather dry, but important subject, "A Will or an Estate Plan". A half-hour question period followed and only the lateness of the



TURYN of F.B.I.

evening prevented a prolongation.

Officers elected following the dinner were President Charles Molloy; Vice President Norman Solomon; Secretary Hadwen Stone and Treasurer Frances LaPine.

• **maine**

Steak or lobster was the main item on the menu at Stechino's Hotel, Lewiston, scene of the Maine Chapter Dinner on Friday, October 26.

Retiring President Bob Byram was toastmaster for the evening and following head table recognitions, he introduced Bentley President Thomas L. Morison, who gave an illustrated talk on the proposed purchase of a new campus site in Waltham. This has been recently confirmed in an official announcement from the College.

At the business session Henry L. Cranshaw, Controller for the State of Maine, was elected President of the Chapter. Other officers included Vice President Gordon G. Lyford; Secretary Harriet A. Luce; and Treasurer Donald B. Clement.

• **merrimack**

Informality was the keynote of the Merrimack Chapter Fall Meeting, on October 23, at Holihan's Hall in Lawrence. President Warren Bennett and President-Elect Bob McAnern joined together in arranging a program featuring the latest New England Telephone & Telegraph Company film on "Telstar" and a refreshment bar which included Holihan's famous frankforts cooked in beer. The ingredients for a successful affair were therefore present, and the fine attendance attested to the popularity and demand for an informal evening. As a result the committee is already talking about a "Spaghetti Feed" in the spring.

New officers elected in addition to President McAnern were Vice President Joseph F. Dineen and Secretary-Treasurer George Adyns.

• **middlesex**

Competing with a solemn and dramatic television announcement by

GREATER BOSTON CHAPTER President Meehan presents gift to retiring President Carmichael (pipe) with approval of (l. to r.) Jim Sarcia, Mary Horne and John Killgoar.



President Kennedy on the Cuban crisis, the October 22nd meeting of the Middlesex Chapter at the M.I.T. Faculty Club was nevertheless an outstanding success.

Mr. William F. Keesler, Senior Vice President of the First National Bank of Boston and a new trustee of Bentley College, was the guest speaker. Mr. Keesler departed on several occasions from his prepared talk "Common Problems in Banking and Accounting" and using his personal experience as an example, he illustrated the value of Bentley training down through the years. He also paid tribute to the continuing fine leadership at the College and stated that he was proud to have been elected to our Board of Trustees.

Following Mr. Keesler's talk, Chapter President Arthur Brickett was presented with a gift as a token of appreciation for his outstanding service to the Chapter and the Alumni Association. During the short business meeting Mr. Brickett turned over the reins to the new President, Patrick Leary. Other officers elected were Vice President Galen LaRose; Secretary Isabella Kegresse; Treasurer Delbert Lawson.

• **new hampshire**

Mrs. Dolores Bridges, widow of New Hampshire's late Senator Styles Bridges, was the guest speaker at the New Hampshire Chapter Fall Dinner held in Aurore's Restaurant, Manchester. John Kanoules, D50, President, introduced Mrs. Bridges. Her interesting talk on current domestic and international affairs was well received by the group. A spirited question period resulted and

among the participants were M. G. Sherman and Paul E. Tierney, National Alumni Officers from Boston.

• **new york city**

President Douglas K. Sawyer, called the fall meeting of the New York Chapter together at the Brass Rail Restaurant, Seventh Avenue on Wednesday, November 14th. Dean Rae D. Anderson was present from Boston as speaker of the evening and his talk on the latest developments at the College was illustrated with colored slides on the proposed relocation site. President Sawyer, in his remarks, pointed out the importance of maintaining a strong alumni chapter in the New York City area and indicated that more of our younger graduates should be encouraged to seek employment in this great financial center with its many fine opportunities for advancement.

A new corps of officers was installed with Walter Neilon, Office Manager at Lever Brothers Inc., as President; Joseph L. Kelley was elected Vice President.

Bentley Trustees present at the meeting were John E. Cowles, Maurice E. Goldman, David F. Houlihan and Edward C. Hunt.

• **norfolk county**

Alumni in the Route 128 area and northern boundaries of Norfolk County held a very successful new chapter dinner on Tuesday, November 20, at Mary Hartigan's Restaurant, Route 1A in Dedham.

Robert Macomber, D48, and George Phalen, D43, were Co-Chairmen of the Organizing Committee

and reported that a complete slate of officers would be elected at a spring meeting.

Overcoming an acoustics problem from the adjoining room, our busy after-dinner speaker and Trustee, Mr. Edward J. Powers, again related his



AFFABLE ED POWERS

many years of exciting experiences with the Boston Garden-Arena Corporation, in what he termed as "The Wonderful World of Sports".

Bentley President, Thomas L. Morison, concluded the evening with appropriate greetings from the College and presentation of colored slides on the proposed new campus in Waltham.

• northwest conn.

Our congenial trustee and alumnus, Edward J. Powers, Vice President of the Boston Garden-Arena Corporation, was the keynote speaker at the November 8th meeting of the Northwest Connecticut Chapter held at DeAngelo's Restaurant in Waterbury. His behind-the-scenes commentary on 34 years of service at the Boston Garden was well-flavored with personality highlights on such attractions as the Ice Shows, Boston Celtics, Boston Bruins, the annual circus and various collegiate sporting activities. Concluding with his well-known story on "You put the picture of the little boy together right, Dad, and you'll make the World right", Mr. Powers received a standing applause from those present.

Alumnus Jack Mont, D32, invited

the chapter members for a spring outing at his home, complete with barbecue offerings, etc. Chapter President Jim Maccalous accepted the gracious invite and everyone is looking forward to this event.

• phila. - delaware

Country Clubs are becoming popular spots for meetings of our Alumni Chapters. The Du Pont Country Club in Wilmington, Delaware was the setting for the Philadelphia-Delaware Chapter Dinner on Tuesday, November 13th.

Following a chicken dinner menu, President Bernard I. McInerney, generally known as "Mac", introduced Bob Kimball, Alumni Secretary. Bob outlined recent developments at the College, and indicated that a significant announcement would be forthcoming soon, relative to a future relocation of the College. He emphasized, however, that Bentley would continue to operate an Evening Division at 921 Boylston Street and it would be several years before the transition could be made to a suburban campus. After a question period, the chapter voted on a slate of officers with William Borrebach, E38, accepting the role of President. Edward W. Stewart was named Vice President and Richard W. Baker, Jr., Secretary-Treasurer.

• rhode island

The Rhode Island Chapter meeting on Wednesday, November 7, was held in the pleasant surroundings of the Metacomet Country Club in

East Providence. President Jim Miligan extended official greetings to the group and introduced Mr. Timothy Carmody, Principal Insurance Examiner, State of Rhode Island, as guest speaker of the evening. Mr. Carmody reviewed the supervisory program which the State of Rhode Island exercises over Hospital Insurance Regulations.

William H. Christopher, D29, was named as the new President of the Chapter and other officers elected were Vice President, Howard K. Sullivan; Secretary, Warren L. Stetson; Treasurer William E. Alexander.

• south shore

Meeting at the new Charterhouse Motel in Braintree on Monday, November 5, the South Shore Chapter was privileged to have Rae D. Anderson, Vice President and Dean of Bentley College, as guest speaker.

Chapter President Douglas Bailey expressed appreciation for the excellent attendance which resulted in extra tables being brought in to accommodate the overflow.

Dean Anderson was introduced by Bob Kimball, Alumni Secretary, and in his well-known, humorous manner reviewed recent developments at the College including information on the pending purchase of a new campus site in Waltham. He pointed out that increasing enrollments, traffic congestion and a gradual squeezing operation as a result of the Prudential Insurance Company developments in the Back Bay area had caused the Officers and Trustees to study relocation possibilities. A ques-



BOSTON LUNCHEON CLUB makes donation to Bentley. Club President Bill Burke turns over check to our Secretary-Treasurer Henry Porter as club officials (l. to r.) Leroy Henderson, Margaret Reid, Don Nickerson, and Bob Daley look on.

tion period followed Dean Anderson's talk and the general remarks from the group indicated favorable reaction to a proposed relocation.

• **springfield**

Mr. Edward J. Powers, Vice President and Treasurer of the Boston Garden - Arena Corporation, was guest speaker at the Springfield Chapter Dinner held on November 5, at the Storowtown Tavern in West Springfield.

Mr. Powers, an alumnus and trustee of Bentley College, spoke informally to the group in relating his 34 years of experiences, both humorous and serious, in this famous sports arena.

Larry Downey, Chapter President, introduced the guest speaker and also asked Mr. M. G. Sherman, National Alumni President, for a few remarks.

• **washington - balt.**

Meeting at the I.B.M. Test Center in Washington, D.C., on Thursday, November 15, members of the Baltimore - Washington Chapter tested their executive abilities while playing the famous I.B.M. Management Game. Prior to engaging in their decision making challenge, a number of the alumni met for an informal dinner with Chapter President John Holleran, Jr. Navy Captain Ed Kingman, D36, served as Program Chairman and arranged for this very interesting and educational evening.

• **western new york**

The Annual Meeting of the Western New York Chapter was held on September 29, at the Hotel Syracuse Country House, with the wives and sweethearts of the alumni adding a nice touch to the proceedings. Highlights of the noon through evening program were a ladies luncheon and tour of the Syracuse Airport, cocktail hour, and a dinner-dance with gift drawings for everyone present.

At the meeting of the alumni in the afternoon, Mr. George Noonan, Admissions Director at Bentley College, outlined an Admissions Liaison Program for Alumni Chapters. The Western New York Chapter has been



WOMEN'S CHAPTER HEAD TABLE featuring (l. to r.) Treasurer Lillian Call, Secretary Eleanor Morgan, Bob Kimball, Vice President Dorothy Latsey, alumni V. P. Paul Tierney and President Gertrude Maher.

selected to launch the pilot operation during 1963. This challenging project was heartily endorsed by the meeting and area chairmen were appointed with Robert W. Ball of Rochester as General Chairman.

Lew Williams, Chapter President, presided during the meeting and at dinner released the gavel to newly-elected President, Carmen Bruno. Other officers elected at the business session were Vice Presidents Walter Hyla and Bob Ball, Secretary Karl Wilson and Treasurer Joseph Martiney.

• **women's chapter**

Choosing the historical surroundings of The 1812 House in Framingham Centre the Women's Chapter held a delightful and most successful luncheon meeting on Saturday, November 3. Undaunted by the torrent of rain, the ladies filled the dining area to capacity figures and the very excellent program which unfolded during the afternoon brought many complimentary expressions to Miss Lillian Call and her Program Committee.

Miss Gertrude Maher, Chapter President, officially greeted the alumnae and their guests following the luncheon, but through the unique device of a pre-luncheon interview game everyone in attendance participated in a personal introduction program conducted throughout the luncheon.

The entertainment feature of the day was provided through a travelogue movie presented by Miss Alice T. Phelan, Sales Representative for

Irish Airlines. Prizes of airline travel bags were distributed to the lucky ticket holders at the conclusion of the movie.

• **worcester**

Through the initiative of Worcester Chapter President Thomas E. McDonough and the kindness of Mr. Edward L. Clifford, President of the Worcester County National Bank, the fall dinner meeting was held on October 25, in the Bank's private dining room.

Following dinner Mr. Theodore K. Keith, Vice President of the bank and head of its Operation Center at West Boylston Street, outlined the installation and development of its electronic data processing system since 1954.

He stated that the bank now has all its checking and savings accounts completely mechanized.

Upon completion of his remarks the group moved to the Operations Center for a practical demonstration of the system. Checks literally flew through the fast-moving IBM 1401 and everyone was amazed at the rapidity of the entire operation. Bank statements and accounts were updated in what appeared to be the twinkling of an eyelash and checks were sorted at gun shot speed. The result was a most enjoyable and educational evening.

New officers elected at the short business meeting were President Marvin I. Lainer; Vice President Harold E. Fogg, Jr.; Secretary Eleanor F. Morgan, E52; Treasurer Carl E. Schmidt.

. . . dec. 6, boston — official announce



PRESIDENT MORISON ADDRESSES the gathering of newspapermen, television people, Waltham officials and neighbors, alumni, and special guests at the Algonquin Club. Other distinguished personalities at the head table are (l. to r.) Dean Anderson, President Emeritus Lindsay, Trustee Chairman Smith, Governor Volpe, Mayor Rhodes of Waltham and Ronald T. Lyman, Jr.



ALUMNI PRESIDENTS, past and present, studying map of the future with President Morison are Thoresen, Powers, Joyce, Kinsman, Durdle and Sherman.



RECEPTION COMMITTEE for this great day includes (l. to r.) Dean Pengergast, Controller Thurman, Miss Christine Gounaris (Secretary to Dean Anderson), Secretary - Treasurer Porter, Mrs. Winnifred (O'Brien) Pemberton (Secretary to the President), Dean Dandes, and Director of Public Relations Bourne.

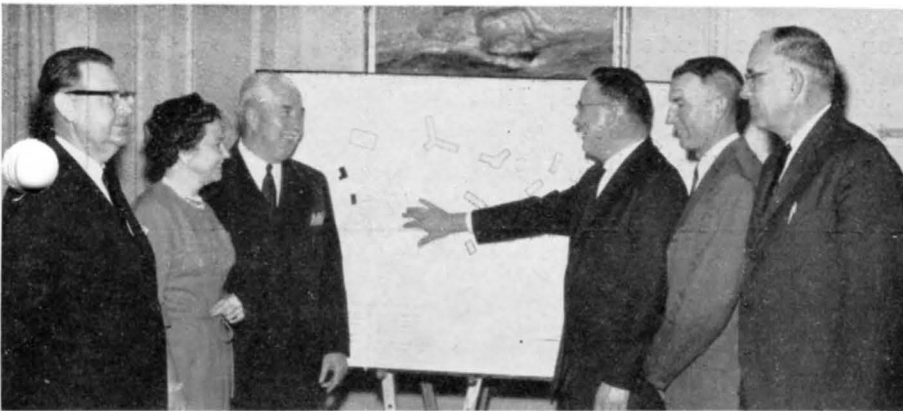
ement on new campus site in waltham

FACULTY AND STAFF assemble with other guests to hear campus development plans.



LINDSAY, MORISON, VOLPE AND RHODES pause to pose for the battery of photographers on hand to record this historic affair.

MUTUAL INTERESTS are discussed by Chairman Smith, Mr. Lyman, President Morison, Mayor Rhodes and Dean Anderson.



NATIONAL ALUMNI OFFICERS reacting with enthusiasm to President Morison's interpretation of the site plan are (l. to r.) Matty Murtha, Helen Queenan, Paul Tierney, Bill Turkington and Herb Corey.



John Liner ASSOCIATES, INC.
INTERNATIONAL INSURANCE ADVISORS



429 WATERTOWN STREET
NEWTON 95, MASSACHUSETTS
AREA CODE 617 969-7150

MEMO TO: FINANCIAL EXECUTIVES

If you are responsible for the financial security of your company

If you are directly or indirectly charged with the purchasing and programming of your company's insurance

If control of costs is one of your corporate functions

. . . we urge you to consider having a periodic insurance Audit and Analysis performed by independent insurance experts who are not engaged in the sale of insurance.

Here are several reasons why the Audit technique is being used by many leading companies:

- Reduces insurance expense.
- Verifies that the insurance policies are designed properly and contain no condition which would make losses uncollectable.
- Will tell you if you are buying too much or too little insurance.
- Brings to your attention all possible exposures to loss with recommendations as to insurance or self-insurance.
- Points out methods whereby risk can be eliminated.
- Provides you with a "Guide" for future insurance programming and brings you up to date on modern insurance practices.

JOHN LINER ASSOCIATES, INC. is a nationally-known firm of independent advisors working on a fee basis for corporations of every size and description in the United States and Canada.

For further information, please write to:

JOHN LINER ASSOCIATES, INC.
429 Watertown Street
Newton 95, Massachusetts

Through the Years

Ace Art Treasurer



FRED C. ANDERSON, E21

E 20 EDWARD I. RAYMOND has signed checks for millions of dollars worth of baled cotton as Treasurer of E. A. Shaw & Co., Inc., Boston cotton brokers.

JOHN C. DIESELMAN is office manager for Morse-Smith-Morse, Inc. of Waretown, Mass.

D 21 RUSSELL E. CASE is associated with the Massachusetts Division of Employment Security in Worcester as a Field Investigator.

HORACE H. FELTHAM is the president of the Melrose Trust Company and active in affairs of his Massachusetts community.

E 21 Treasurer and Director of the Ace Art Co., Reading, Mass., is FRED C. ANDERSON of Arlington, a C.P.A. in both Massachusetts and New Hampshire.

D 22 ADAMS W. BARTELLI is an accountant with George Mabbett & Sons Co. in Plymouth, Mass.

DAVID P. COLLINS is a librarian and teacher in Peabody, Mass.

Vice President and Sales Manager for Freeman & Co., Inc., Boston, is HOWEL T. EVANS.

EDWARD H. GANNON, C.P.A., assistant treasurer and manager of the Utility Accounting Dept. for Stone & Webster Service Corp. in New York City, lives out on Long Island, in Baldwin.

BERNARD R. HETU, of Inglewood, California, is the systems and procedures executive for the Bohemian Distributing Co. of Los Angeles.

E 22 Mr. and Mrs. ERNEST A. PRICE were honored by friends and relatives on their fortieth wedding anniversary last June. The picture on this page will tell you that Mr. Price not only enjoys a contented marriage but also his work with the Cambridge Paper Box Company as sales manager.

CHARLES W. TUCKER returns to the Boston area as director of management services for Chambers, Wiswell and Moore, advertising agency. For the past seven years he operated his own management consulting office in Washington, D.C.



The Prices are still right after forty years. (See note in E22.)

D 23 JOHN M. AHEARN of Milton is office manager for U. S. Industrial Chemicals, Inc., Boston.

Manager of Special Services for Fenwal, Inc. of Ashland, Mass., is HOMER L. BATES.

Senior Municipal Accountant for the Commonwealth of Massachusetts is CARL T. CAREY of Belmont.

Associated with the dairy industry for nearly 40 years, FRED R. CEPURNEEK, of Ashland, is now a Principal Reviewer for the Federal Milk Market Administration, Boston.

D 24 Mayor Gilbert of Augusta, Maine, has named ALDEN T. MERRILL to the three-man police commission of that city. Mr. Merrill continues in the real estate business.

Bentley trustee NICHOLAS PICCHIONE, national vice president of the National Association of Accountants, attended the fall meeting of the Bangor-Waterville (Maine) chapter to present a banner and an achievement award. Mr. Picchione is senior partner of Nicholas Picchione and Company and founder-president of Dome Publishing Company in Providence.

THREE STALWARTS



Still smiling over memories of the experiences they shared in the 45-year span of Bentley history are (l. to r.) Miss Bertha Stratton, Mrs. Bertha Lyman and Miss Alice Sullivan.

A BOUQUET FOR BERTHA

Mrs. Lyman retired at the end of 1962.

Back in April, 1925 Miss Bertha Alfred became secretary to H. C. Bentley and served him until 1933. Marriage and family then claimed her undivided attention for a while. As daughter Janie progressed in school and in life, Mrs. Lyman was able to devote more hours to administrative and promotional projects at Bentley.

(Janie is now married and the mother of two children. Her husband, Gerald J. Holtz, has a place on

the Bentley Alumni Honor Roll for winning the Massachusetts Gold Medal and the Elijah Watt Sells Honorable Mention on the C.P.A. examination in 1953.)

We know Bertha Lyman has earned a special spot in the minds and hearts of thousands in the Bentley family. For all, we express thanks to you, Bertha, for your many conscientious contributions through the decades and, most recently, for your splendid assistance in preparing many, many sections of "Through the Years."

—R.A.B.

Appointed to Chair



HOWARD F. GREENE, E24

E 24 HOWARD F. GREENE, associated with J. K. Lasser and Company of Boston since 1944 and chairman of the Accounting Department of Northeastern University since the same year, has been appointed Public Relations chairman for the Massachusetts Society of Certified Public Accountants.

D 25 EARLE W. BALDWIN of Framingham Centre is a sales representative for Investors Diversified Services.

Senior statistician in the Treasurer's office of General Motors Corp., Detroit, is GEORGE H. BOSWORTH.

Dr. JOHN J. BRENNAN commutes from his home in Arlington to the Veterans Administration in Bedford where he is chief of the Counseling Psychology Service.

HENRY F. BUFALINO has advanced to the executive vice presidency of Besse, Osborn & Odell, Inc. of Boston.

A recent note from JOSEPH MONGI-AT informs us that he is still president and executive officer of the Milford Savings and Loan Association in Milford, Mass.

E 25 FRANK T. BERRY crosses the Hudson River each day to work for The Flintkote Co., New York City, as assistant to the treasurer. The Berrys live in Harrington Park, New Jersey.

LAWRENCE A. CAPORAL, controller for F. J. O'Hara & Sons, Inc., Boston, lives in Wollaston.

Another Wollaston resident is IBM systems engineer JAMES C. CLARK.

D 26 ERNEST BARRASSO, of Medford, is listed as Sales Manager for L. & C. Abruzzese, Inc., a firm he's been with since 1927.

Bauer's Bakery in Lisbon Falls, Maine, is owned and operated by WILLIAM E. BAUER, JR.

Also active in the food business is EVERETT C. BLOIS, director and assistant treasurer of Bob Ware's Food Shops, Inc., Brookline.

ROLLAND E. BOUCHER is the business manager for Birchard Buick, Inc., in Pittsfield, Mass.

E 26 ALBERT P. BALLARD services clients in the Ossipee region of New Hampshire with his own public accounting firm.

Starting as a bookkeeper in 1922 for A. T. Bless & Co., LOUIS BARRON is now the Proprietor.

MAURICE BETTERMAN is the president of Credit, Inc., Boston, and lives in Randolph.

A mathematics teacher for many years, EARL G. BOYD is now a Professor of Mathematics at Taft College in Taft, California.

D 27 EDWARD W. CARLSON is the new treasurer of the Plastic Academy Products Corporation, Leominster, following an association of many years with Commonwealth Plastics Corporation of the same city.

D 28 Bentley trustee JOHN E. COWLES, vice-president and treasurer of St. Regis Paper Company, was elected a director at a recent meeting of his company's Board of Directors.

D 29 RAMOND T. O'KEEFE, recently advanced to Senior Vice President of the Chase Manhattan Bank, New York City, is in charge of the real estate and mortgage loan departments.

E 29 THOMAS B. DUDLEY, assistant comptroller of the First National Bank of Boston, is the current chairman of the Finance Committee of the Boston chapter of the American Institute of Banking.

D 30 During the summer CLARENCE B. REDMAN was named deputy comptroller of the currency of the United States by Secretary of the Treasury, C. Douglas Dillon. Mr. Redman moved to Washington from his chief bank examiner position with the Federal Reserve System in Dallas, Texas.



JOHN G. MONT, D32, receives congratulations from Pres. Olson, Naugatuck Savings Bank, on his promotion to Executive Vice President.

Elected Bank President



WINTHROP NEWCOMB, E30

E 30 This year's Weymouth farm premium book was dedicated to CARL F. ANDERSON, Pembroke, town treasurer for many years. Tribute was paid to his 4-H work on the local, county and state levels.

WINTHROP NEWCOMB, C.P.A., was elected president of the Essex Savings Bank, Lawrence, at the annual meeting of the corporators in November. Mr. Newcomb moved from the Andover Savings Bank to the executive vice presidency of Essex Savings a little over a year ago. In 1937 Mr. Newcomb became the first Bentley man to win a silver medal for honor grades on the C.P.A. examination. He also was awarded the Elijah Watt Sells honorable mention that year.

FRANCIS A. RIHA, assistant treasurer of John Donnelly and Sons, is serving on the Board of Directors of the Boston chapter of the National Office Management Association.

D 31 ROBERT W. ELLWOOD, an accountant with Handschumacher for the past fourteen years, is a director of the Boston chapter of the National Association of Accountants.

D 32 JOHN G. MONT, a corporator of the Naugatuck (Conn.) Savings Bank, has been elected to the newly-created post of Executive Vice President.

E 32 JOHN M. CALL, after thirteen years as an auditor in the Automotive Division of the General Motors Corporation, went with the State of New York, Division of Audit and Control, in 1957, as examiner of municipal affairs. His home is in Watervliet, near Albany.

FRANK SIEGEL has advanced to the position of controller of ABC Stores, Inc. since joining that firm in 1958. The company operates four retail self-service department stores from headquarters in Lynn, Mass.

D 33 The Brockton Enterprise and Times recently featured Thomas J. Lyons in one of their illustrated "Spoketraits." He was recognized for his contributions to the community as treasurer and general manager of the Quinn Freight Lines and his many civic activities.

Commander HOWARD E. WHEELER, USN, is now the commanding officer of the United States Naval Training Center in Cheyenne, Wyoming. Commander Wheeler has established an outstanding record in naval aviation since earning his wings in September, 1941.

E 33 No sooner did ARTHUR H. BRICKETT complete his term as president of our Middlesex alumni chapter than he was elected president of John Hancock's Quarter Century Club.

JOHN J. CURRAN, C.P.A., tax manager of the Norton Company and Norton International, Inc., was elected president of the Worcester Taxpayers' Association at their annual meeting in December.

MAX HYMANS, owner-principal of M. Hymans and Company, Boston public accounting firm, is the first vice president of the Massachusetts Association of Public Accountants.

Analyzes for Army



WILLARD A. ELDRIDGE, D34

D 34 Army career man Lt. Col. WILLARD A. ELDRIDGE is currently deputy commander of the 3rd Battle Group 18th Infantry and has been a member of the 94th for fifteen years. He lives in Stoneham with his wife and two children. His designation for daily Army work is Chief, Cost and Price Analysis Office, Quartermaster Research and Engineering Command, Natick.

E 34 CHARLES D. MCKINNON, manager of the Brighton office of The National Shawmut Bank of Boston, is an active participant in such community affairs as United Fund, Lions' Club and Y.M.C.A.

D 35 The American College of Life Underwriters in Chicago has awarded the



Passing of gavel starts term of office for ARTHUR H. BRICKETT, E33.

coveted Chartered Life Underwriter designation to WILLIAM D. CROWELL, representative of the Equitable Life Assurance Society of the United States. Mr. Crowell has his office in the Park Square Building, Boston and lives in Reading.

D 36 RAYMOND V. JONES, JR. was promoted to the position of cashier for the First National Bank of Rochester, New Hampshire.

Hugh E. Pedersen of Easton, Connecticut, has been appointed Production Manager for Warner Slimwear, a division of the Warner Brothers Company headquartered in Bridgeport. In addition to the home plant, Mr. Pedersen will be responsible for production activities in division plants in Georgia, Alabama, Florida and Puerto Rico.

HAROLD E. WORTHEN, former assistant cashier of the First Manufacturers National Bank of Lewiston and Auburn, Maine, has been named auditor of the First Agricultural National Bank of Berkshire County according to a news clipping from the Berkshire Eagle of Pittsfield, Mass.

D 37 RICHARD BERMINGHAM has moved his family to Wellesley but is still president of Birmingham Oil Company, Inc. of Jamaica Plain.

ROBERT B. SHANKER, C.L.U., assistant manager of the South Boston District Office of the Metropolitan Life Insurance Company, was feted recently by his associates in honor of his completion of twenty years' service with the company.

E 37 PAUL E. BREWER is assistant vice president at the National Bank of Plymouth County and lives in Whitman, Mass.

D 38 CASSIUS A. BOONE, III, has been trailed to Louisville, Kentucky, where he is vice president of the Barton Distilling Company of Chicago.

HAROLD S. CASH, JR. is a bishop in the Reorganized Church of Jesus Christ of Latter Day Saints. He and his wife

and four children make their home in Council Bluffs, Iowa.

This fall JAMES F. HOWE was elected president of the Board of Certified Public Accountants for the State of New Hampshire.

HAROLD C. MCGUIGAN is controller for the division of Avco Corporation with headquarters in Nashville, Tennessee.

E 38 ERNEST F. FECTEAU is not only assistant treasurer of the Framingham Trust Company but has also been town treasurer of nearby Hopkinton since 1938.

R. DOUGLAS HALL, JR., serves as comptroller of Gibbs Shipyards, Inc. in Jacksonville, Florida.

ROBERT J. WEAVER, Bentley professor and vice chairman of the Accounting Department, is the current chairman of the subcommittee on educational programs of the National Association of Accountants.

D 39 Last summer LOUIS BIANCHINI was presented the "American Shoe Designers' Award," the highest honor available to individuals in the United States in his field. Mr. Bianchini is chief stylist for the Commonwealth Shoe and Leather Company, Whitman, Mass. He is probably best known in the industry as the originator of the Bostonian slip-on moccasin with the low sweep, hand-sewn front seam. He and his wife and two children still live in his native town of Bridgewater.

JOHN J. CALLAHAN was recently made vice president of the Manchester (N. H.) Sand and Gravel Company.

Back in September Paul Ganley's column "West Side Story" in the Boston Traveller featured SIDNEY H. TUSHIN in a "Portrait of Civic Leader." Noted under the categories of professional work and public activity for Mr. Tushin, comptroller, Moller-Osgood Furniture Company, Cambridge, were his past presidency of the Boston chapter of NOMA, his

N. H. CPA Head



JAMES F. HOWE, D38

participation in the local chapter of the Financial Executives of America, the New England chapter of the Tax Executives of America and the American Institute of Management. He has also been president of Temple Beth Israel, Waltham, and listed in three "Who's Who." We know Sid best as director of our National Alumni Association.

E 39 HARRY M. ANDREWS, accountant for the Sharon Box Company, Sharon, Mass., has, along with his wife, ventured into a new business in Rockland by purchasing the Rose Lou Dress Shop.

The "Certificate of Accomplishment" was recently awarded by the National Institute of Credit to WENDELL E. CARLSON of Wakefield. Mr. Carlson is with the American Policyholders' Insurance Company.

NORMAN LENOX, formerly assistant controller, is now controller of the Zayre Department Store chain. He has been with Zayre and its predecessor for twenty-one years. The Lenoxes live in Newton.

Awarded Certificate



WENDELL E. CARLSON, E39

D 40 ROBERT D. JOY was recently appointed treasurer of the Middle Atlantic Transportation Company, Inc., New Britain, Connecticut, and its subsidiary, Atlantic Trailer Service. Active in his industry, Mr. Joy serves as chairman of the Motor Carrier Council and as a director of the National Accounting Council, both of the American Trucking Association. Mr. and Mrs. Joy and their two children live in Burlington, Connecticut, where he holds the office of town treasurer.

E 40 The Quincy Patriot-Ledger recently printed an article about their former newspaper delivery boy, DOUGLAS J. BAILEY, who has established a successful career as a life underwriter with the Guardian Life Insurance Company of America, Boston. His continued interest in Bentley has been evidenced by the leadership he gave to our South Shore Alumni Chapter as president.

WILLIAM J. GRAVES of Newtonville is a member of the John H. Bishop General Agency, in Waltham, of the John Hancock Mutual Life Insurance Company

His service as chairman of the Boston program to celebrate the independence of Jamaica, on August 6, 1962, led to the appearance of LIONEL O. LINDSAY on the "Dateline Boston" T.V. Show to discuss the significance of independence for the West Indian country. With Kaplan Furniture Company since 1942, Mr. Lindsay is now in charge of the cost accounting department and factory personnel.

D 41 EMERY E. ALLAIN was elected controller of the Great Northern Paper Company in November. After a stint in public accounting, Mr. Allain entered the paper industry and has been with Great Northern since 1954 as assistant controller. His residence is in Millinocket, Maine.

Word has come to us that JOHN K. SKELTON was elected president of the Franklin (N. H.) Savings Bank.

CARL V. STOCKWELL, assistant vice president and manager of the Groton office of the Connecticut Bank and Trust Company, will continue to be quite active

Television Appearance



LIONEL O. LINDSAY, E40

in Groton community affairs as newly elected head of the town housing authority.

E 41 JAMES R. MAC LEAN, chief, Foreign Trade Division Boston Regional Offices of the U.S. Department of Commerce, spent two months of 1962 in Nigeria as director of the U.S. Marketing and Business Development Mission.

A man very much in the news since the 1.5 million-dollar mail robbery last summer is WILLIAM F. WHITE of West Roxbury. Mr. White joined the Post Office Department as a letter carrier in 1929 and is now New England Regional inspector.

D 42 GEORGE BICKFORD, an accountant with Kemper Insurance Company in Boston for the past twenty years, is currently serving on the Finance Commission in Stoughton, Mass.

LAWRENCE R. MASSE is the office manager of Einiger Mills, East Douglas, Rhode Island. He has been with this company for fifteen years and currently lives in Forestdale.

LAWRENCE B. ROBINSON, assistant vice president of the Home National Bank of Brockton, will be the treasurer of the Massachusetts Chapter Arthritis and Rheumatism Foundation's fund drive in early January. A resident of Whitman, Mr. Robinson is also deputy tax collector for the town.

E 42 VICTOR C. MOURY, North Easton, Mass., is now assistant vice president of the First National Bank of Boston. He has been with the bank since 1949 and will continue his duties as loan officer.

D 43 EDWARD J. APPLE, Jr., partner of Apple and Albano, Pittsfield accounting firm, was elected president of the Catholic Youth Center in Pittsfield for the current year.

FRANK C. DODA, C.P.A., of Salem, Mass., was recently elected treasurer of the Institute of Internal Auditors' New England chapter. He is a resident auditor for B. F. Goodrich.

Recognized with Promotion



GEORGE E. PHALEN, D43

WALTER T. MUDGE is assistant treasurer of Electric Mutual Liability Insurance Company in Lynn and lives in Swampscott.

GEORGE E. PHALEN has been vice president of the First National Bank of Boston since June. In addition to participating actively in Bentley alumni affairs, Mr. Phalen is president and director of the New England Credit Men's Association and treasurer of the Bouve-Boston School of Physical Education and Therapy. The Phalen family lives in Westwood.

D 46 ARTHUR A. GANDELMAN, C.P.A., of Newington, Connecticut, has become a partner in Manuel Cole and Company, a public accounting firm with offices in Hartford and Thompsonville.

D 47 Long prominent in conservation and wildlife activities in Massachusetts, CHARLES MARSTON III of Groveland has been recommended for a seat on the five-man governing board of the Massachusetts Division of Fish and Game. Mr. Marston, a former state senator and

representative, runs an insurance business in his area and is an official of the C. S. Marston Co., Georgetown.

JAMES M. TUTUNJIAN, who operates his own accounting firm and offices in Harvard Square, is a member of the Accounting and Auditing Procedure Committee of the Massachusetts Society of Certified Public Accountants. He is also director and treasurer of the Bel-Water Associates.

E 47 RAYMOND ELIOTT describes himself as a self-employed Certified Public Accountant from Worcester. He is also a member of the faculty at Northeastern University, teaches at Becker Junior College, Worcester, and conducted intensive post-graduate review courses in accounting at Western New England College in Springfield for candidates preparing for the November C.P.A. examination.

SAUL SNITZER piloted B 29's in World War II and now pilots the B and W Footware Company of Webster, Mass. as vice president and general manager. In his spare time, he has won much acclaim in sailing circles for his Class A success with a 505 meter boat.

D 48 THOMAS K. BAER, C.P.A., is audit manager for Lybrand, Ross Bros. and Montgomery in Louisville, Kentucky and also teaches accounting at Bellarmine College in the same city.

EDWARD M. BROWN, who successfully operates his own accounting firm in Lynn, is serving on the insurance committee of the Massachusetts Society of Certified Public Accountants.

ROGER L. DeRALEAU has been named assistant vice-president of the Valley Bank and Trust Company in Springfield, Mass., where he has worked since his graduation from Bentley.

We have learned that **CARL R. HAGERSTROM** is comptroller of the Enterprise Wheel and Car Corporation in Bristol, Virginia.

GILMAN C. HARVEY, JR. is with the General Electric Company in Owensboro, Kentucky, as manager of cost and contract accounting.

Internal auditor for DuPont's Textile Fibers Plant in Old Hickory, Tennessee, is **VERNON G. HASLAM, JR.**

D 49 ALVIN H. CARLEY, who works as manager of the Audit Staff for Lybrand, Ross Bros. and Montgomery in Boston by day and lectures to accounting classes at Bentley by night, is serving on the Public Relations Committee of the Massachusetts Society of Certified Public Accountants.

CURTIS M. CARLSON has been appointed controller of the National Commercial Bank and Trust Company, in Albany, New York.

FOSTER D. BOICE of Pittsfield has been promoted to manager of Electronic Data Processing for the Berkshire Life Insurance Company.

High School Teacher



LYDIA H. HAWES, E49

DONALD R. DUPRE, C.P.A. and Senior Staff member with Hitchcock and Company, Springfield, Mass., received his law degree from Western New England College last June and started teaching introductory accounting there on an evening basis in the fall term.

Staff Sergeant **FRANK A. EDSON** of North Adams, Mass. was named "Top Support Airman" for September for his outstanding performance of duty connected with the Greensboro (N. C.) recruiting squadron of the United States Air Force. Sergeant Edson travels about North Carolina and the eastern half of South Carolina testing enlistees or prospective candidates from high schools.

In June **HERBERT V. GEARTY**, auditor of the Union Savings Bank of Boston, was a member of the first graduating class from Brown University Graduate School of Savings Banking, organized by the National Association of Mutual Savings Banks.

Adjunct assistant professor of accounting **ALVIN J. HIRSCHFELD**, a C.P.A. in Manchester, Connecticut, delivered two lectures this fall to the staff of the Connecticut Development Commission in his role as adjunct assistant professor of accounting at the University of Hartford.

JOHN J. LYMAN has moved from his small business administration position to the Percy Wilson Mortgage and Finance Corporation of Chicago as their manager of mortgage investments for the eastern region. He and his family continue to live in Concord, New Hampshire.

The Ansonia (Conn.) Evening Sentinel has added **CHARLES R. PIERSON** to its business staff. For the last twelve years, Mr. Pierson has been with Novara and Company, a New Haven accounting firm.

E 49 Another member of the Public Relations Committee of the Massachusetts Society of Certified Public Accountants is **BENJAMIN BENSON**, a partner of the Robert Boyer Company in Boston.

Effective August 1, 1962 **CARMELO V. CARUSO** of Malden became controller of the Marson Corporation in Revere, Mass.

Marine Insurance Manager



PAUL M. JAQUITH, E49

Did you know that the sole procedures analyst on the Massachusetts state payroll is a Bentley man? **MARK F. CONLEY**, a twenty-year veteran with the state's Comptrollers Bureau is that man. He is currently engaged in an "in-depth" investigation of the budget and accounting procedures for the Department of Public Works. The Conleys live in Randolph where Mark is clerk of the Personnel Board.

Mrs. **LYDIA (Huttula) HAWES** of Westminster started teaching commercial subjects in the Oakmont Regional High School, located in Ashburnham, near Worcester.

As manager of insurance and claims for the Mystic Steamship Division of Eastern Gas and Fuel Associates, **PAUL M. JAQUITH** of Waltham will be responsible for marine insurance and claims for the Boston Tow Boat Company and the company's foreign shipping subsidiary as well as his own division. Mr. Jaquith has been with Eastern for thirty years.

STEPHEN J. SOTAKOS of Lowell has been named Associate Consul for the National Shawmut Bank of Boston by the American Institute of Banking. This will add to his duties as assistant branch manager at Essex Street for National Shawmut by having him coordinate the college level courses offered by the Institute to other bank employees.

ROBERT M. WOOD, finance and industrial manager for the eight New England plants of J. P. Stevens Company, received additional recognition in his community when he was appointed to the Board of Public Works in North Andover, Mass.

D 50 A promotion at the Atlas Tack Corporation has moved **F. JAMES BALDWIN** into the position of production superintendent at their New Bedford plant. The last we heard Mr. Baldwin was also president of the Industrial Management Club of Greater New Bedford.

Effective the first of the year, **GLEN E. FIFIELD** became mill controller at the West Carrollton (Maine) mill of the Oxford Paper Company.

New Matrix Treasurer



ELLIOT W. PARSONS, D50

PAUL B. KELLEY is now a representative in the Natick area for Hardware Mutual Sentry Life upon completion of his advanced training in the Boston Home Office. Mr. Kelley was previously a credit manager with the General Electric Company.

Director of Meetings for the Boston NAA chapter is CHARLES H. KILTY, JR., the District Accountant of Hotpoint Sales and Distribution Division of General Electric Company.

The Matrix Research and Development Corporation, Nashua, New Hampshire, announced the election of ELLIOT W. PARSONS as treasurer. Mr. Parsons came to Matrix in May, 1962 as controller following six years at Sanders Associates, Inc. as supervisor of general accounting.

JOHN R. SNOW is now manager of the General Tax Accounting Department of General Electric's Lamp Division in Cleveland, Ohio. The Snows live in nearby Lynchhurst.

New controller for the Litchfield County (Conn.) Hospital is GEORGE A. TERWILLIGER. In accounting work at that hospital for twelve years, Mr. Terwilliger will now be responsible for the accounting and overall fiscal management of that institution.

WENDELL P. WEYLAND, a C.P.A. and partner of Simmons, Shannon, Donovan and Brady in Lynn, last June added a law degree from Suffolk University to his accomplishments.

E 50 Prior to his election in September as Andover (Mass.) town accountant, WENDELL A. MATTHESON was head teller and bookkeeper at the Lawrence Cooperative Bank.

In December UZIEL PONN was named executive director of the Summit Nursing Home, Brookline. For the past seventeen years Mr. Ponn was executive secretary for the Hebrew Home for the Aged and executive director of the Newton Nursing Home.

MARCUS C. SOUTHWORTH has been promoted from assistant cashier to assistant vice president of the Home National Bank, Brockton, and has been assigned to the Loan Department.

SIDNEY S. SALT, loan officer with the Naumkeag Trust Company of Salem, was teaching a course on analyzing financial statements in the American Institute of Banking during the fall term.

D 51 The name of DANIEL G. BARRETT was recommended to the United States Senate by President Kennedy for postmaster of Rowley, Mass. Mr. Barrett was formerly with the State Street Bank and Trust Company in Boston.

Miss SIMONE A. CYR has her own public accounting practice and tropical residence in Cocoa Beach, Florida.

After four years in the Boston office of Liberty Mutual Insurance Company, JAMES MACKEEN has been transferred to the Los Angeles area.

The Reverend ALDEN W. POWERS is a part-time curate at All Saints' Episcopal Church in Indianapolis while he works for his degree in social work at the Indiana University.

E 51 ROBERT R. COSTELLO is manager of accounting for the local facility of Minneapolis-Honeywell Company and lives in Georgetown, Mass.

RAYMOND F. SUNDSTROM, JR. finds time in between his responsibilities as director of placement for the college and teaching evening accounting classes to lend a hand to the Public Relations Committee of the Massachusetts Society of Certified Public Accountants.

D 52 RUDOLPH A. RUSSO practices law in the Johnstown area of New York with the firm of Walsh and Walsh.

The next time you are in Port St. Joe, Florida, why don't you look up JACK B. WILLIAMS, who is a city auditor, clerk and treasurer there?

E 52 J. PAUL FINNEGAN, manager of the Tax Department for Lybrand, Ross Bros. and Montgomery, lives in Egypt, Mass., where he is quite active in community affairs.

CHARLES J. GRAY of West Roxbury is employed by the United States Army Audit Agency in Waltham, and is a member of the Federal Government Accountants Association.

District Scout Executive



JAMES J. COONEY, D53

E 50 Prior to his election in September as Andover (Mass.) town accountant, WENDELL A. MATTHESON was head teller and bookkeeper at the Lawrence Cooperative Bank.

In December UZIEL PONN was named executive director of the Summit Nursing Home, Brookline. For the past seventeen years Mr. Ponn was executive secretary for the Hebrew Home for the Aged and executive director of the Newton Nursing Home.

MARCUS C. SOUTHWORTH has been promoted from assistant cashier to assistant vice president of the Home National Bank, Brockton, and has been assigned to the Loan Department.

Now Chief Accountant



FRANCIS E. McAULIFFE, E52

FRANCIS E. McAULIFFE is chief accountant for Tubular Rivet and Stud Company in Quincy. The McAuliffes and their three children live in Norwood.

DAVID F. ROCHE, cost coordinator in the Cost Accounting Department of Western Electric's North Andover plant, was recently appointed town accountant for North Andover.

D 53 After graduation from Bentley, JAMES J. COONEY made the decision to enter the career of professional scouting. His experience since that time has qualified him for appointment as District Scout Executive of the Mt. Tom District in the Pioneer Valley Council of the Boy Scouts of America. He served in a similar capacity in the Monadnock Council in Gardner, Mass. The Cooneys and their four children will be living in the Holyoke area.

WILFRED H. CREIGHTON is the assistant treasurer of the Hingham Institution for Savings and a corporator, and is working in the Mortgage Departments. He was previously with the Edwin L. Pride Accounting Firm in Boston.

DANIEL J. DRISCOLL of Malden has moved from the United States Gypsum Company to the Dewey and Almy Chemical Division, W. R. Grace and Company, Cambridge, as statesman accountant in the Financial Services Division.

JOHN H. NOYES accepted a position in December with Boucher & Marrow in Brattleboro, Vermont. He was previously chief accountant for the Hale Company, Arlington manufacturer of dining-room furniture, and spent the seven preceding years with the Vermont Gas Corporation in accounting.

E 53 DEAN P. FRIBERG is an assistant treasurer for Provident Institution for Savings in Boston and lives in Maynard with his wife and two children.

JOHN D. MACARTHUR, a specialist in warranty claims for the commercial engine operations of General Electric's Flight Propulsion Division in Cincinnati, Ohio, is serving as treasurer for the combined councils of Greater Cincinnati Knights of Columbus.

ROBERT J. McINTOSH, an electronics data processing analyst for the New England Power Service Company, has been appointed to the Personnel Board in Weymouth.

ERNEST V. PERREAULT, with the South Shore National Bank since 1952, was promoted to the office of auditor at a recent meeting of the bank's Board of Directors. The Perreaults live in Braintree.

RONALD REDQUEST, comptroller of Republic Pipe and Supply Company, Roxbury, is most active in the Canadian-American Club helping to cement relations between the two countries. He is also an associate director of the Boston Chapter of the National Association of Cost Accountants.

D 54 HAROLD M. BAILEY wound up his active duty in the Army as a sergeant and is now back at Bird and Son, Inc. in East Walpole as an assistant internal auditor.

JULIAN HARWOOD is currently working for the Framingham Computer Control Company and is living in Wellesley.

D 55 THOMAS J. GRADY of Hamden, Connecticut, is the plant controller of Seymour Manufacturing Company, which is a subsidiary of the Bridgeport Brass Company's metal division of the National Distillers and Chemical Corporation.

E 55 In his work for the American Casualty Insurance Company, CHARLES W. DONAHOE of Medfield instructs other employees in the operation of the Company's computer machines.

WALTER E. FROST was promoted to assistant cashier of the First National Bank of Boston during the past year. The Frosts make their home in West Concord, Mass.

Operations manager for Booma-Breed, Inc., of Swampscott, KENNETH C. KNIGHT has been elected the twenty-third president of the Massachusetts Oil Heating Association. He is also serving as master of John H. Heard Lodge, AF&AM, in his home community in Ipswich.

Oil Association President



KENNETH C. KNIGHT, E55

D 56 JOHN M. STONE of West Hartford has moved from the home office of Connecticut Mutual Life Insurance Company to the Ralph H. Love Agencies as a Connecticut Mutual representative.

E 56 In December, PAUL W. CORRIGAN, a Lynn attorney, was elected president of the St. Mary's Holy Name Society there.

D 57 ARNOLD B. BRIGGS, previously an auditor with Scovell-Wellington in New Bedford, has accepted the position of auditor with Sanders Associates, Inc., Nashua, New Hampshire.

PFC ROBERT Y. FUDGE of Medford is a radio teletype operator with the Fourth Army Divisions 14th Artillery, stationed in Furth, Germany.

Outstanding JayCee



RALPH H. JANNINI, D57

RALPH H. JANNINI was unanimously elected treasurer of the Massachusetts Junior Chamber of Commerce at the Pittsfield State Convention. Mr. Jannini, a Woburn resident, has been employed by the New England Electric System for the past five years and is presently a travelling auditor.

BRUNO J. JOBIN has used his evenings, while working for the Remington Arms Corporation in Bridgeport, Connecticut, to earn a B.S. degree in accounting with high honors from Quinnipiac College in Hamden, Connecticut.

About the same time ROBERT J. JOLICOEUR passed the Massachusetts Certified Public Accountant examination, he also received his BBA degree in accounting from the American International College, Springfield, which he attended on an evening basis.

SP. 5 JOSEPH KASENENKO was pleased about the citation of merit he received as the "Soldier of the Month" at the Army Chemical Center in Maryland. He served there as a management accountant.

JEROLD A. SOLOMON received his certificate from the Massachusetts Board of Certified Public Accountants and by this time has opened his own accounting office in Worcester.



Lindsay Paintings Build Scholarships

The above painting now graces the home in the Chicago area of a contributor to the Lindsay Scholarship Fund. Mr. Lindsay wishes to share some of his reactions with you:

"The nostalgic scene of good, old New England arrived in perfect condition. It has many details which are close to our hearts. We are very, very pleased with the picture."

Another donation came in from Philadelphia where chapter members chipped in enough to meet the \$100 minimum and then held a drawing to determine who would win the painting. Outgoing President Bernard I. McInerney was the one who had his name pulled out of the hat and is now corresponding with Mr. Lindsay about the specifications for an artistic creation in oil.

E 57 ROBERT J. BULLOCK has put his Bentley education to work at the Army Finance School, Benjamin Harrison, Indiana.

JOHN CADIGAN of Winthrop accepted a position as an assistant national bank examiner for the New England area after earning his law degree at Suffolk University last June.

MYER L. SPECTOR is a bank examiner for the Federal Home Loan Bank Board located in Greensboro, North Carolina. The Spectors live in Atlanta, Georgia.

The long distance prize goes to JOHN F. Sullivan, who is comptroller of Tropic Estates, Ltd. in Honolulu, Hawaii.

D 58 Last summer RICHARD P. BROSEAU was commissioned a second lieutenant in the United States Air Force and assigned to Olmsted AFB, Pennsylvania.

E 58 ROBERT A. BONNA left Cape Cod to accept a position with the New England Conservatory of Music as chief accountant and office manager. He plans to return to Bentley on an evening basis to earn credits for his degree.

Gum Products Controller



I. NED CARUSO, E58

I. NED CARUSO, the controller of Gum Products Inc., is also a partner of Caruso and Chandler, a public accounting firm in Revere, and active in East Boston community affairs.

STEPHEN C. DAVENPORT, a practicing attorney and a member of the John P. Darmody and Company public accounting firm, managed to earn his master of laws in taxation from Boston University at the same time he was serving his first term in the state legislature from Ward 19. His home is in Jamaica Plain.

John Hancock Promotes



CARMELLA A. PANICO, E58

CARMELLA A. PANICO of West Roxbury has been promoted to a section head by the John Hancock Mutual Life Insurance Company.

RICHARD H. POTTER, JR. of Natick is serving as a campaign director for the Middlesex South County March of Dimes. Mr. Potter is assistant treasurer at the Natick Federal Savings and Loan Association and is president of the Natick Junior Chamber of Commerce.

D 59 EUGENE J. BANTEBAS is the operations manager for the Whirlpool Corporation facility located in Charlotte, North Carolina.

RICHARD T. FINIGAN managed to earn a B.S. degree at Suffolk University and to be listed in "Who's Who in American Colleges and Universities" before the Army caught up with him. He is now an SP 4 assigned to the office of the deputy commander and chief of staff.

LEO F. LOCKE of Roslindale is an accountant with the Boston Edison Company.

D 60 PFC RAYMOND F. AYERS is a clerk in Company C of the Second Armored Division, 67th Armor.

CLAYTON J. BRIOTTI just had time to earn an associate degree in accounting from Quinnipiac College in Hamden, Connecticut, before being drafted by the Army in the fall of 1961. The last duty station for this PFC was Ingrandes General Depot in France.

ELIOT I. GREEN, a semi-senior accountant with James Slutz of Boston, successfully passed the recent Certified Public Accounting examination.

When NICHOLAS L. IACUZIO entered the Army as a private last summer, he was assigned to D Company of the Second Training Regiment for eight weeks of basic training at Fort Dix, New Jersey.

RICHARD MANOOSHIAN, JR. recently won his sergeant's stripes while serving as an instructor at the Army Finance School for Benjamin Harrison, Indiana.

CALVIN R. POWERS of Marblehead

Martin E. Pomeroy

Martin E. Pomeroy (D36) accomplished much in the 48 years before his untimely death near the turn of the year.

Successful as a public accountant and as an agent for the Nationwide Insurance Company, he was also highly respected for his fraternal and community work.

We recall him best as one of the instrumental organizers and outstanding presidents of our strong Western New York Alumni Chapter.

is another graduate on active service with the Army.

Private GARY H. WILLEY also underwent basic training at Fort Dix before being assigned to a special duty post.

While serving in the Finance Department of the United States Army in Germany, HENRY WOLFORTH II of Whitman has been made a sergeant.

E 60 JAMES R. GALVIN, Brockton office manager of the Compressed Steel Shaft Company of Readville, was given an additional responsibility as Steel Buyer.

Since entering the Army in February, 1962, Private MALCOLM M. SPENCER of Waltham has completed basic training at Fort Dix, New Jersey and eight weeks of military police training at the Provost Marshal General School, Fort Gordon, Georgia.

D 61 JOHN I. CROWN recently won promotion to A2-C in the United States Air Corps. He works on the general ledger and the industrial fund ledgers in the Accounting Department at the Charleston (S. C.) Air Force Base.

As of last July WILLIAM A. FREDERICKS of Scabrook, New Hampshire, was en route to Japan for a two-year tour of service with the Army Security Agency.

Leo T. Foster

We note with regret the passing of Leo T. Foster, a former faculty member.

Those in his evening tax classes from 1930 through 1939 will remember him most clearly as he frequently drew from his experience as head of C. F. Rittenhouse's tax department in teaching the fine points of state and federal taxes.

We wish to pay tribute to him for his many years as an educator at Bentley, Boston College, Northeastern and Babson.

In Memoriam

- D 24 A. Everett Cameron
Howard A. Trainor
- E 24 John F. McGuinness
- D 27 Samuel Ritter
Joseph W. Zaborowski
- E 27 Alfred Wurtz
- D 29 Stewart Turkington
- E 30 Francis T. Kane
Charles F. Neagle
- E 31 Leslie F. Thompson
- D 33 Robert C. Haines
- E 33 Elile R. Chenard
- D 34 Laurie Johnson
John Kistulinec
- E 38 T. Francis Begley
- E 39 Charles S. Ferguson
- E 40 Frank A. W. Morrison
- E 41 Frank T. Boardway
- E 43 James A. Moroney
- D 53 Francis J. Farrell
- E 57 Bridie O'Beirne
- E 58 Richard J. Bigwood

DIRECTORY OF ALUMNI CHAPTER PRESIDENTS

BERKSHIRE COUNTY

George E. Emerson, Jr., D56
R.F.D., W. Stockbridge

CHICAGO

Charles E. Hanley, D42
136 North Adams St., Hinsdale

CINCINNATI

Lawrence E. Fisher, E50
9202 Burgess Dr., Cincinnati

CLEVELAND

Lester S. Frost, D33
15601 Van Aken Blvd., Shaker Heights

COLORADO

Charles G. Barzirian, D50
779 Eudora Ave., Denver

DALLAS

Arty B. Smith, Jr., D47
3928 Bryn Mawr, Dallas

DETROIT

James L. Harrison, D38
2705 Burns, Dearborn

EASTERN NEW YORK

N. Vincent Gutsch, D36
1599 Bradley St., Schenectady

GREATER BOSTON

G. John Meehan, E33
95 Montclair Ave., Roslindale

HARTFORD

Charles F. Molloy, D35
400 Hubbard St., Glastonbury

HOUSTON

Peter M. Mattisen, D35
1827 Kirby Dr., Houston

MAINE

Henry L. Cranshaw, D36
6 Patterson St., Augusta

MERRIMACK

Robert G. McAnern, D31
145 Hidden Road, Andover

MIDDLESEX

Patrick J. Leary, E48
59 Slayton Rd., Melrose

NEW HAMPSHIRE

John J. Kanoules, D50
572 Concord St., Manchester

NEW YORK CITY

Walter J. Neilon, E26
173 Riverside Dr., New York

NORFOLK COUNTY

George E. Phalen, Jr., D43
34 Chickering Rd., Norwood

Robert E. Macomber, D48
111 Booth Rd., Dedham

NORTH SHORE

Edward F. Gibbons, E48
25 Glendale Road, Marblehead

NORTHERN CALIFORNIA

Hugh G. Bradwell, D28
1200 Clay St., San Francisco

NORTHWEST CONNECTICUT

Joseph A. Maccalous, D50
454 Norfolk Rd., Torrington

PHILADELPHIA-DELAWARE

William B. Borrebach, E38
419 East Country Club Lane, Wallingford

RHODE ISLAND

William H. Christopher, D29
5 Maplewood Orchard Dr., Greenville

SOUTHERN CALIFORNIA

Harold E. Blanchard, D27
2115 La Canada Crest Dr., La Canada

SOUTHERN CONNECTICUT

Norman E. Couture, D48
24 Short Street, Huntington

SOUTH SHORE

Douglas J. Bailey, E40
620 North St., East Weymouth

SPRINGFIELD

Lawrence T. Downey, Jr., D54
25 Washington Avenue, Thompsonville

VERMONT

Thomas F. Borst, Jr., D49
121 Library Ave., Rutland

WASHINGTON-BALTIMORE

John J. Holleran, Jr., D38
3324 North Rochester, Falls Church

WESTERN NEW YORK

Carmen F. Bruno, D28
36 Avalon Rd., Binghamton

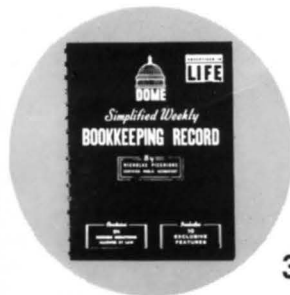
WOMEN

M. Gertrude Maher, E49
46 Appleton St., North Quincy

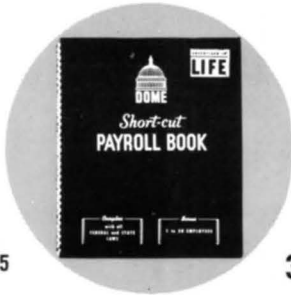
WORCESTER

Marvin I. Lainer, D50
81 Blue Bell Rd., Worcester

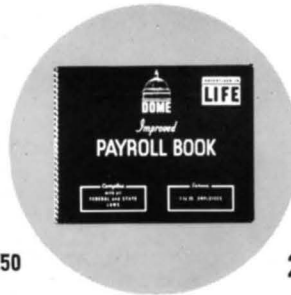
ALL OVER AMERICA IT'S
DOME
or DOUBLE-ENTRY



3.75



3.50



2.75



1.25

For your small clients, use Dome Simplified Bookkeeping Record — America's most widely used single entry system. The Dome Simplified Bookkeeping Record has the enthusiastic support of over one million users . . . has the endorsement of national trade associations . . . the valued respect of Internal Revenue Service . . . and the warm recommendations of accountants, lawyers, and bankers. This one book fits all kinds of businesses.

Buy them at your stationer

ADVERTISED IN
LIFE
NATIONALLY ADVERTISED

DOME PUBLISHING CO., Inc. The DOME Building 357-361 Canal St., Providence 3, Rhode Island • 4802 Loma Vista Ave., Los Angeles, California

Twenty-One Liberal Arts Courses Offered In Second Semester, Evening Division

(Each course has 16 meetings and carries 3 semester hours credit;
registrations are accepted through the third class meeting.)

Course	Number	Description	Day
<i>Data Processing</i>	II † *	Automated accounting systems	Thurs.
<i>Economics</i>	I	Fundamental principles	Tues. & Thurs.
<i>Economics</i>	II †	Domestic & international problems	Tues.
<i>English</i>	I	Composition & literature	Wed.
<i>English</i>	II *	Expository writing & contemporary literature	Mon., Tues., Thurs., Sat.
<i>English</i>	III *	Report writing & research techniques	Tues.
<i>English</i>	IV † *	American literature	Thurs.
<i>Finance</i>	II	Financial institutions	Fri., Sat.
<i>History</i>	I †	United States from 1763 to 1877	Wed.
<i>History</i>	II †	United States from 1877 to date	Mon., Sat.
<i>Humanities</i>	I	Origins of Western culture	Thurs.
<i>Humanities</i>	II † *	Contributions through Middle Ages	Tues.
<i>Law</i>	I	Contracts, sales & securities	Tues.
<i>Law</i>	II *	Negotiable instruments, agency, partnerships & corporations	Mon., Fri.
<i>Management</i>		Comprehensive understanding of management responsibilities	Mon.
<i>Philosophy</i>	I †	Types of logic	Mon.
<i>Psychology</i>	I	Scientific study of behavior	Wed.
<i>Science</i>	I †	Basics of physics, chemistry, & scientific method	Wed.
<i>Science</i>	II † *	Concepts of astronomy, biology, and geology	Mon.
<i>Statistics</i>		Improving statistical reporting	Mon.
<i>Political Science</i>	II †	Study of modern governments (Great Britain & Soviet Union)	Fri.

† Required ONLY for Bachelor degree; all other courses earn credit toward an A.S.A. degree.

* Prerequisite required.

The Massachusetts Board of Registration of Certified Public Accountants "Rules Governing the Issuance of a Certificate" specify that an applicant must have completed courses in "Business Law, Economics, and Finance."

ALUMNI QUALIFIED TO RECEIVE THE A.S.A. DEGREE THIS JUNE MUST PETITION BY MARCH 15. PLEASE CONTACT THE GENERAL OFFICE, 921 BOYLSTON STREET FOR FORMS.

Return Requested

BOSTON, MASS.
PERMIT NO. 56941

PAID

U.S. POSTAGE
NON-PROFIT ORG.

BOSTON, MASSACHUSETTS
921 BOYLSTON STREET

BENTLEY ALUMNI ASSOCIATION